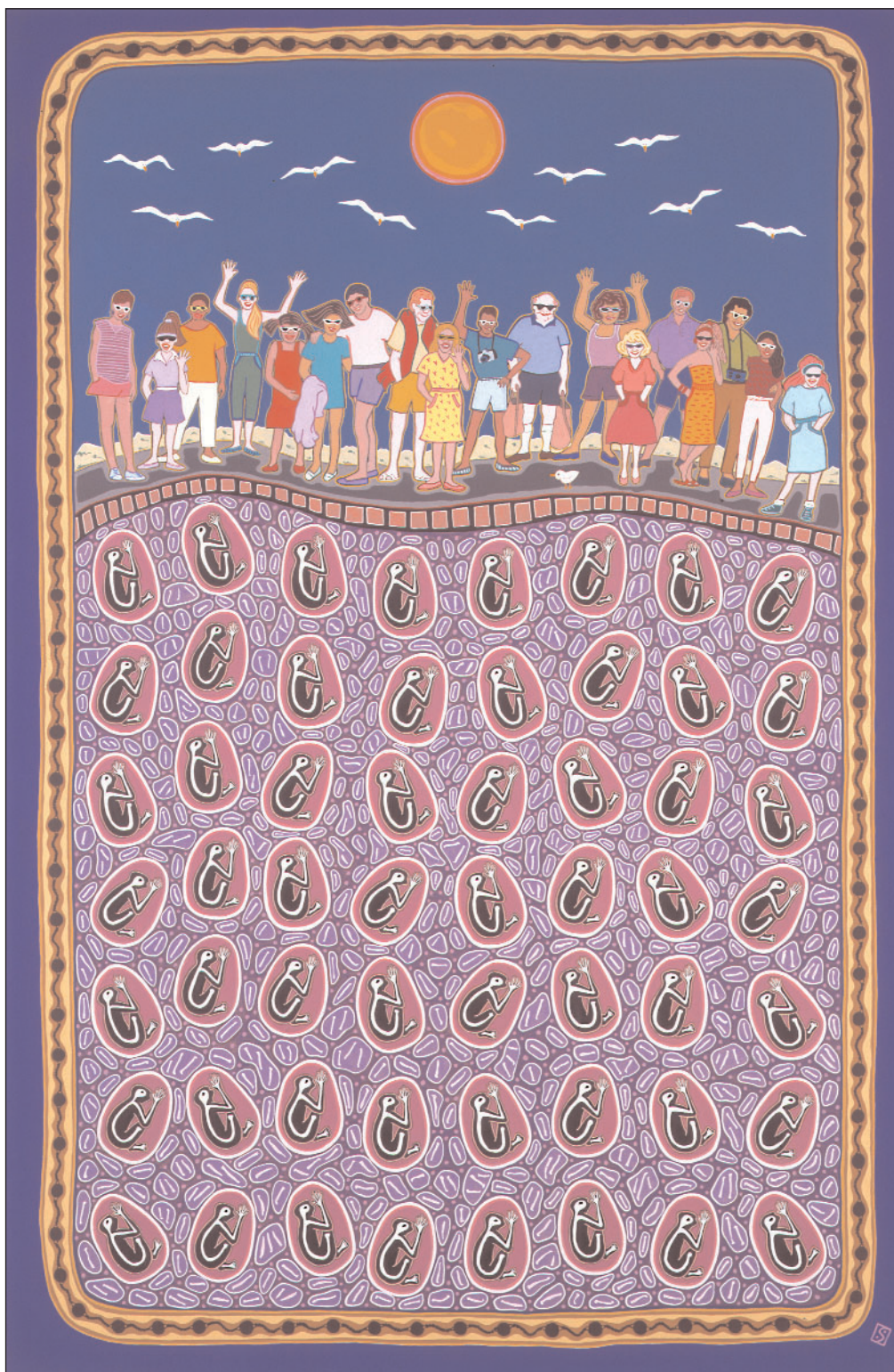


Just Imagine

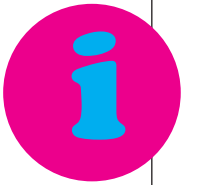
Activities for children



SALLY MORGAN

Greetings from Rottnest

(Language Palyku)



West Australian artist Sally Morgan tells why Rottnest Island is so important for Indigenous people. About 100 years ago the island was used as a prison for Indigenous men; many of them died and were buried there. She uses this artwork to remind us of what happened in the past.

Investigate

These questions are more difficult. They will make you think about how and why the artist made this artwork.

Discover more about **art techniques**, **hidden meanings** and **stories** connected to this artwork.







Look



These questions will help you look closely at the artwork. They will introduce you to art words that will make it easier for you to understand and talk about art.

Try the test on the other side of this sheet to see how many artwords you can remember!

-  **Look** closely; how many birds can you find?
-  Where in the row of people are the men with the cameras **positioned**?
-  What are the **shapes** used in the **border** of this artwork?
-  What **colours** does the artist use in the sun?

Why are the people above the ground smiling and waving?

Do they know what is hidden in the ground beneath them?

Who are the people buried beneath the ground?

What is the artist telling us about the history of Rottnest Island?

Why is a ball and chain design used as a border to this artwork?

Art changes the way we see the world

Produced by the Art Gallery of Western Australia copyright 2004

Do You Remember



Artwords

1. Look at the faces of the people in the upper part of the painting. How are they feeling? What are the **e** _____ on their faces?
2. The artist uses lots of bright oranges and blues in this painting. These are called **c** _____ colours. Do they seem to make the painting lively?
3. This painting tells a story. We call it a **n** _____.
4. An artwork is **s** _____ if both sides are the same and balanced. Is this the case in *Greetings from Rottnest*?
5. When shapes or objects are repeated, they form a **p** _____. Name five of them.
6. The way the parts of an artwork are arranged is called the **c** _____. How has Sally Morgan divided this artwork?
7. What has the artist painted in the far distance? This is called the **b** _____.

Talking Art



- Q. Now that you know about the history of Rottnest Island, find the clues that the artist has used to tell us about the past.
- Q. How does Sally Morgan divide the past from the present?
- Q. What is happening beneath the surface?
- Q. Why does the artist enclose these figures in oval shapes?
- Q. Why does Sally Morgan use such bright and cheerful colours at the top of this artwork while telling such a sad story?

i The Nyoongar name for Rottnest Island is Wadjemup, which means *the place across the water*. Many Indigenous prisoners were sent to Rottnest Island from all over Western Australia. When they died they were buried on the island.

Answers to Artwords

- | | |
|------------------|----------------|
| 1. Expressions | 5. Pattern |
| 2. Complementary | 6. Composition |
| 3. Narrative | 7. Background |
| 4. Symmetrical | |



Principal Partner 2004 Wesfarmers Arts

HOW MANY
DID YOU
SCORE?